

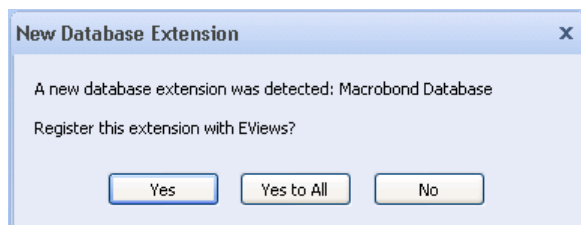
The Macrobond add-in for EViews

With the Macrobond add-in for EViews you can load series from the Macrobond database and you can store series to the Macrobond account in-house database from EViews.

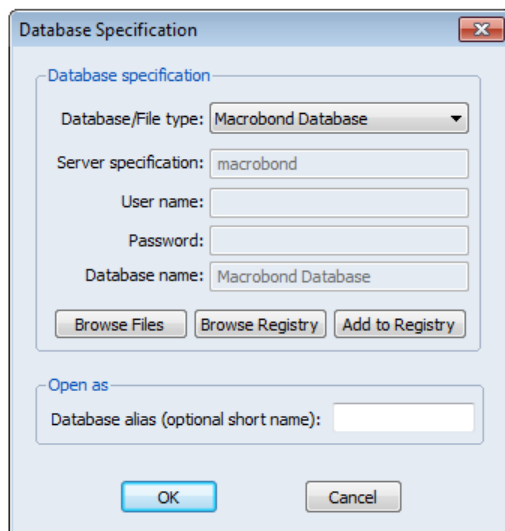
Getting started

You need to have Macrobond 1.2.2 and EViews 7.2 Enterprise Edition (Apr 29 2011 build) or later.

The first time you start EViews after installing the required versions of both Macrobond and EViews, you will be asked if you want to register the Macrobond add-in. To be able to use the add-in, you should answer Yes to this question.



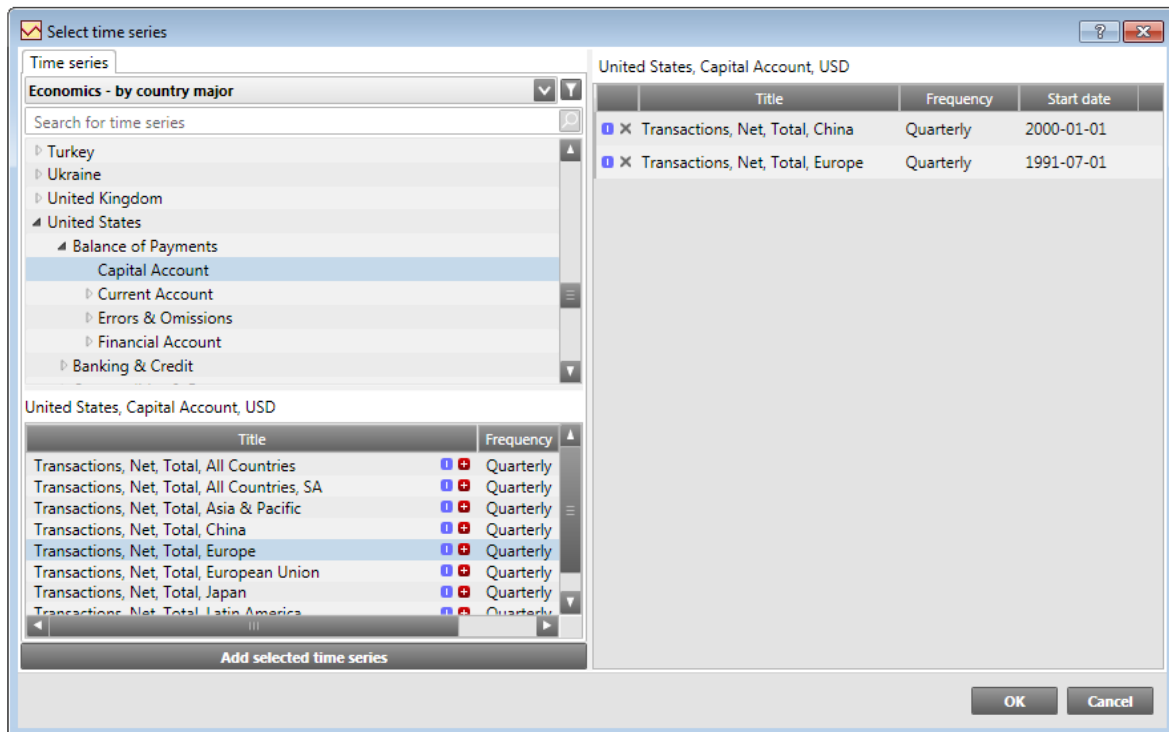
Once the Macrobond add-in is registered, you will see the Macrobond Database in the list of databases shown when you select File | Open | Database in EViews:



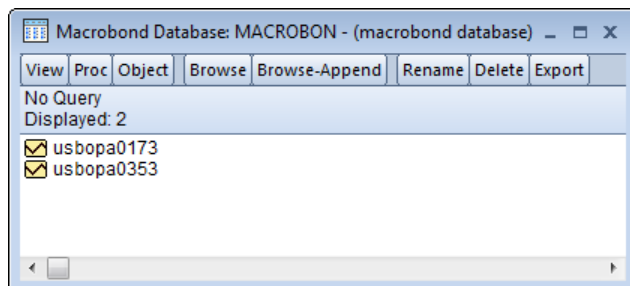
To open the database, just press OK in this dialog.

Reading data into EViews

You can add series to the list of series presented in the Macrobond database window in EViews by pressing the Browse or Browse-append buttons. These commands will display the Macrobond “Select time series” dialog:



You can pick one or more series to add to your database view in EViews.



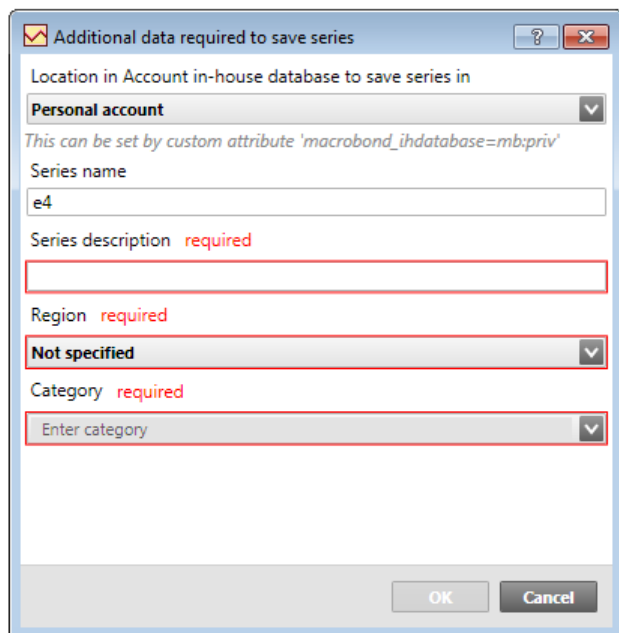
You can now work with these series like series from any other external data source in EViews. The most common operation is to export them to a Workfile. You can do this from the Object or context menu in EViews.

Storing data from EViews

You can store time series in EViews to the “Account in-house database” in Macrobond. The time series will then be available in the Macrobond application.

To store a time series you can do “Store to DB...” from the Object menu or context menu when you have selected a time series in EViews. You may also use drag and drop and drop the series in a Macrobond Database window in EViews.

If more information is required in order to store the series in Macrobond, a dialog like this will be displayed:



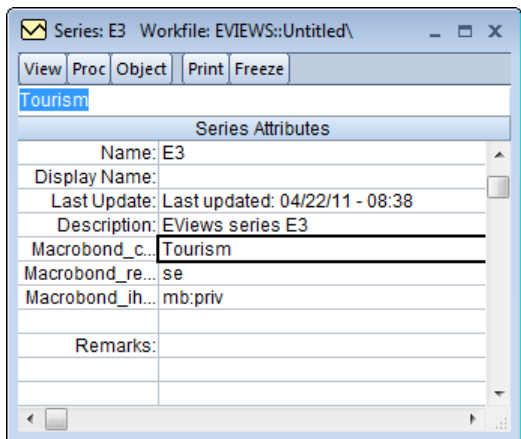
When all information is filled in and you press OK, the series will then be stored.

In order to avoid this dialog, which is useful when automating tasks, you can complement the series in EViews with some additional attributes:

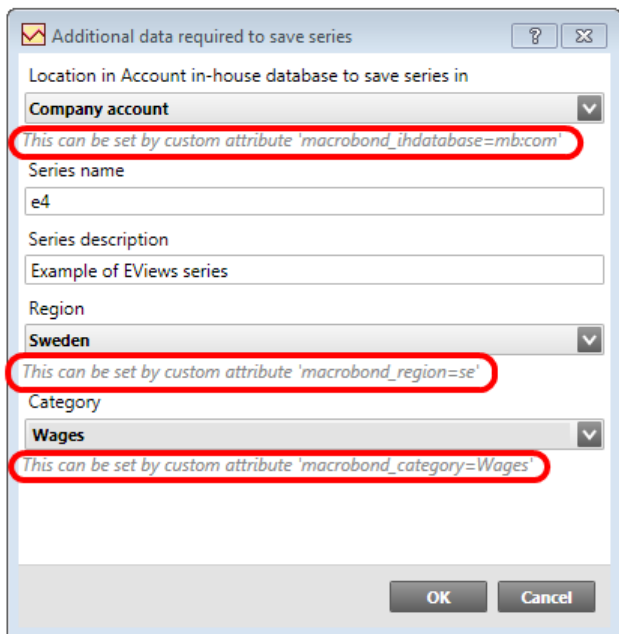
Name	This will be the name of the series when stored in Macrobond.
Description	This will be used as the description of the series.
Macrobond_category	This will be the category of the series when stored in Macrobond. For example, the value could be “Wages”.
Macrobond_region	The country or region code of the series when stored in Macrobond. This must be an existing region. An example is “se” for Sweden.
Macrobond_ihdatabase	This attribute tells Macrobond where to store the series. It can be “mb:priv”, “mb:com” or “mb:lib”.

No dialog will be displayed when all these attributes are present.

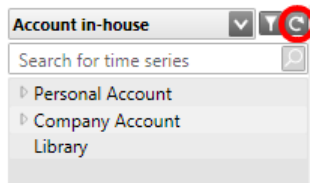
In EViews you can specify these attributes in the View|Label view of a series:



You can see hints for these attributes in the dialog where you enter complementary series information:



If you have the Macrobond application running when you save a new series to the Macrobond database in EViews, you might need to press the refresh button in Macrobond in order to see the new series in the list.



Manually registering and unregistering the add-in

You can manually register the Macrobond add-in for EViews by executing this command in EViews:

```
edxadd Abacus.EViewsDBManager
```

You can unregister the add-in with this command:

```
edxdrop Abacus.EViewsDBManager
```